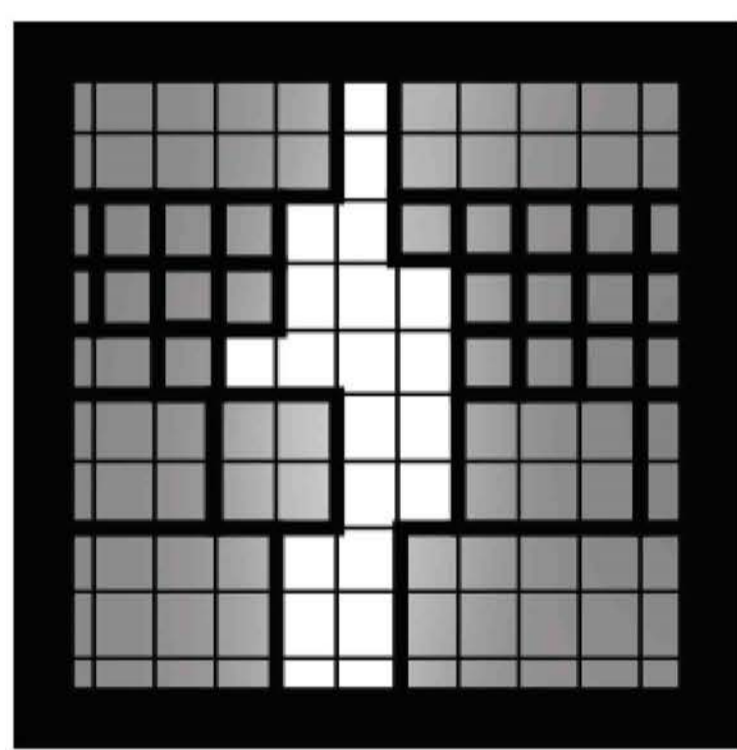
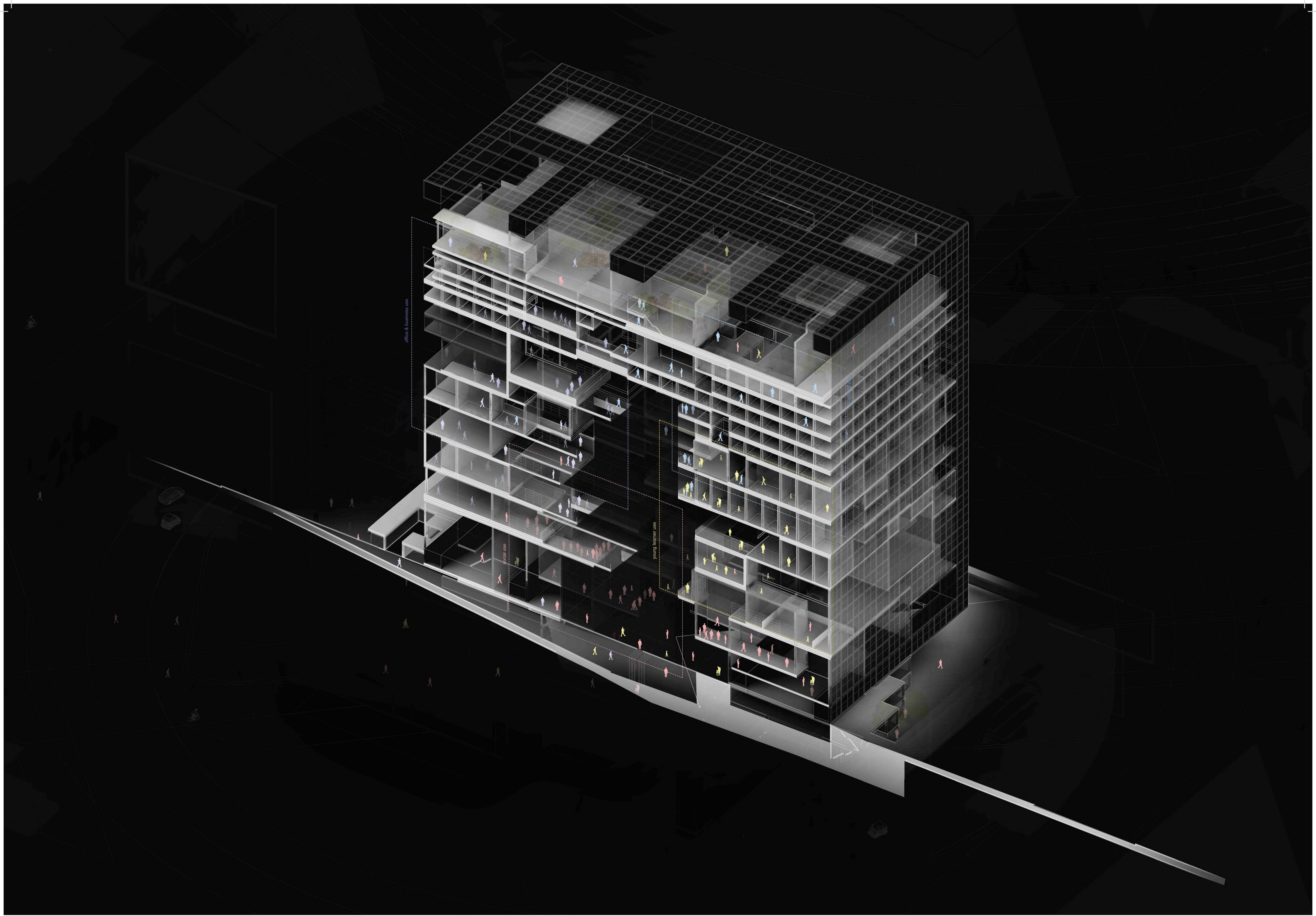


Missing Bride of Jaffa

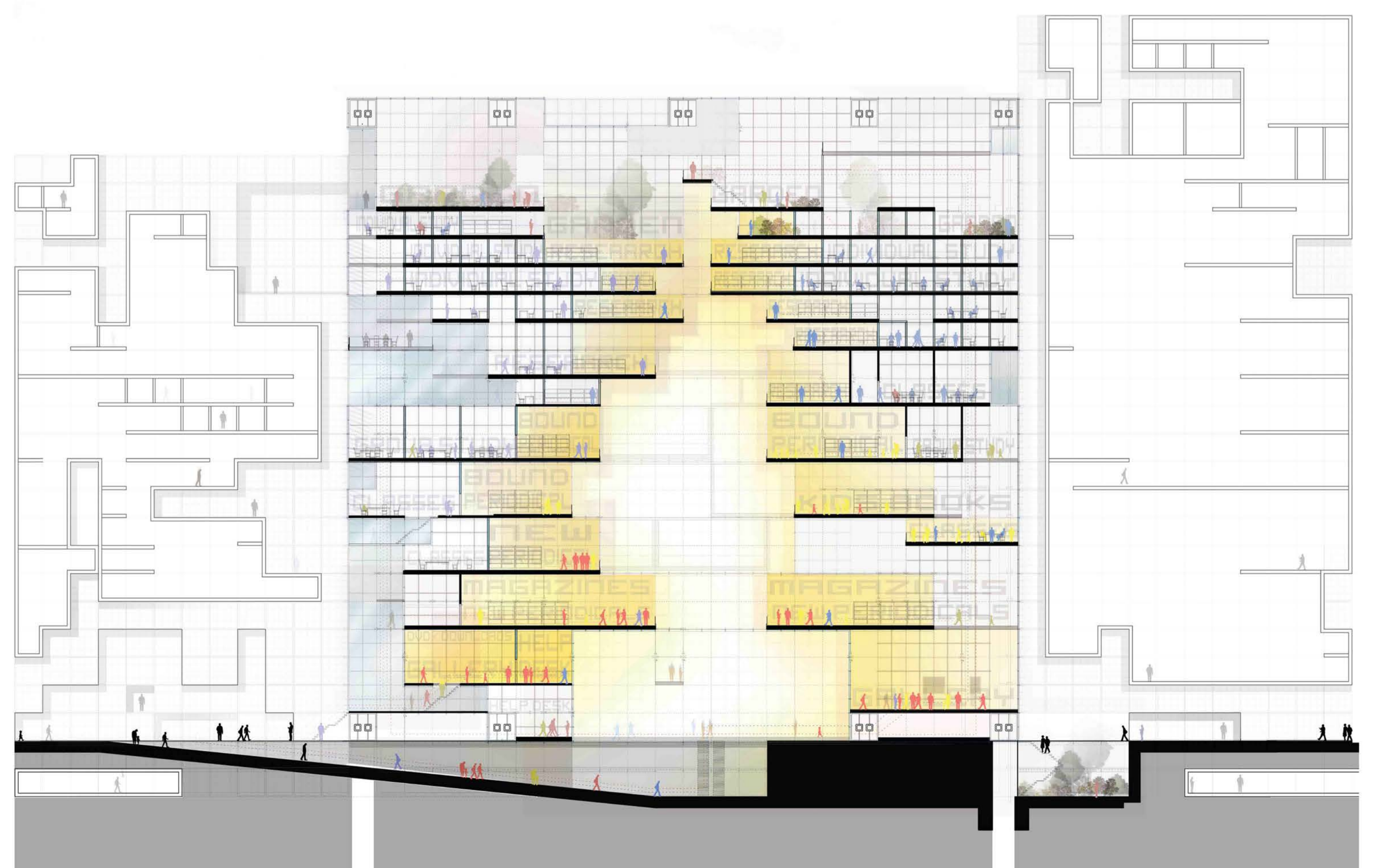
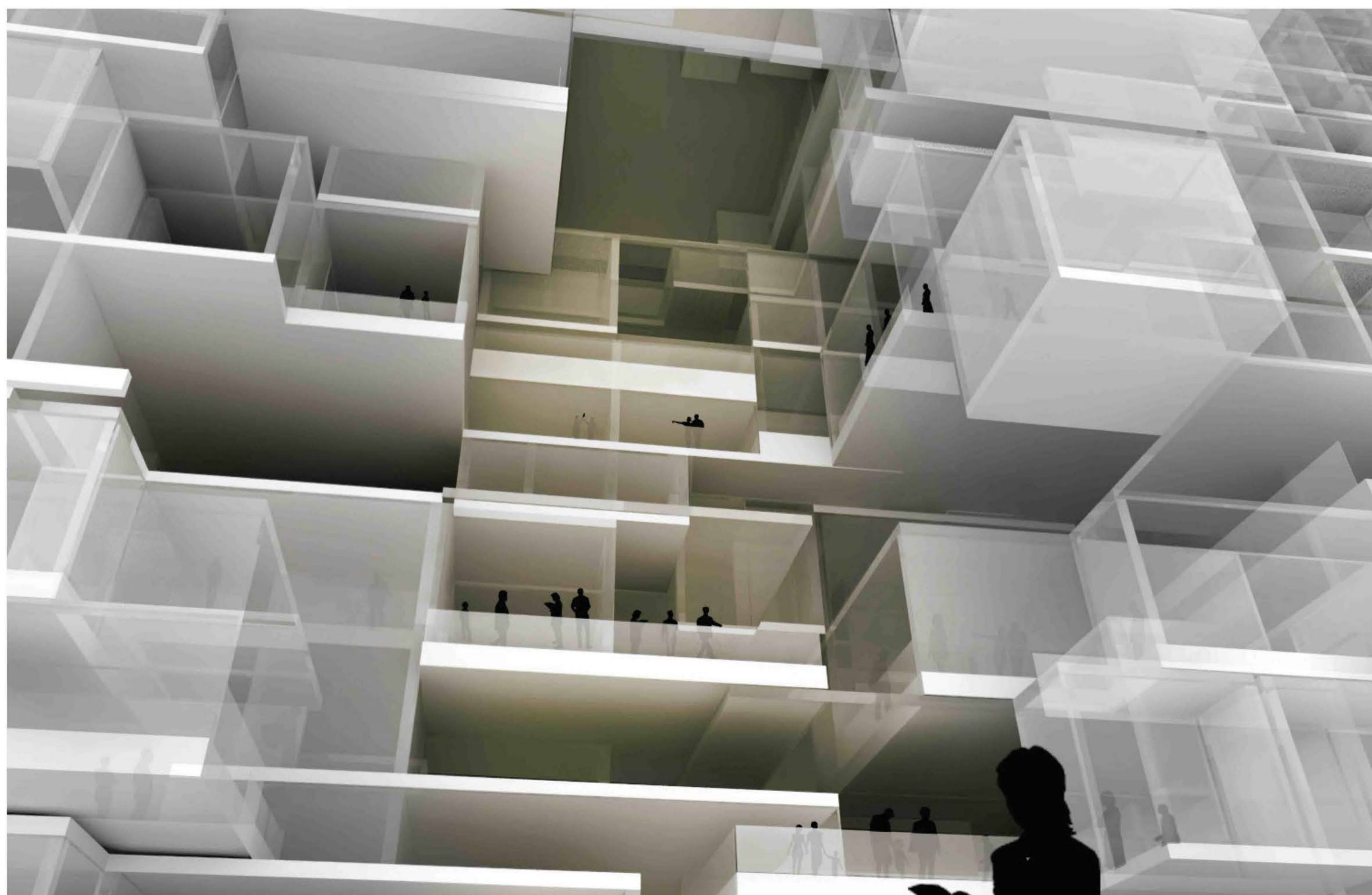
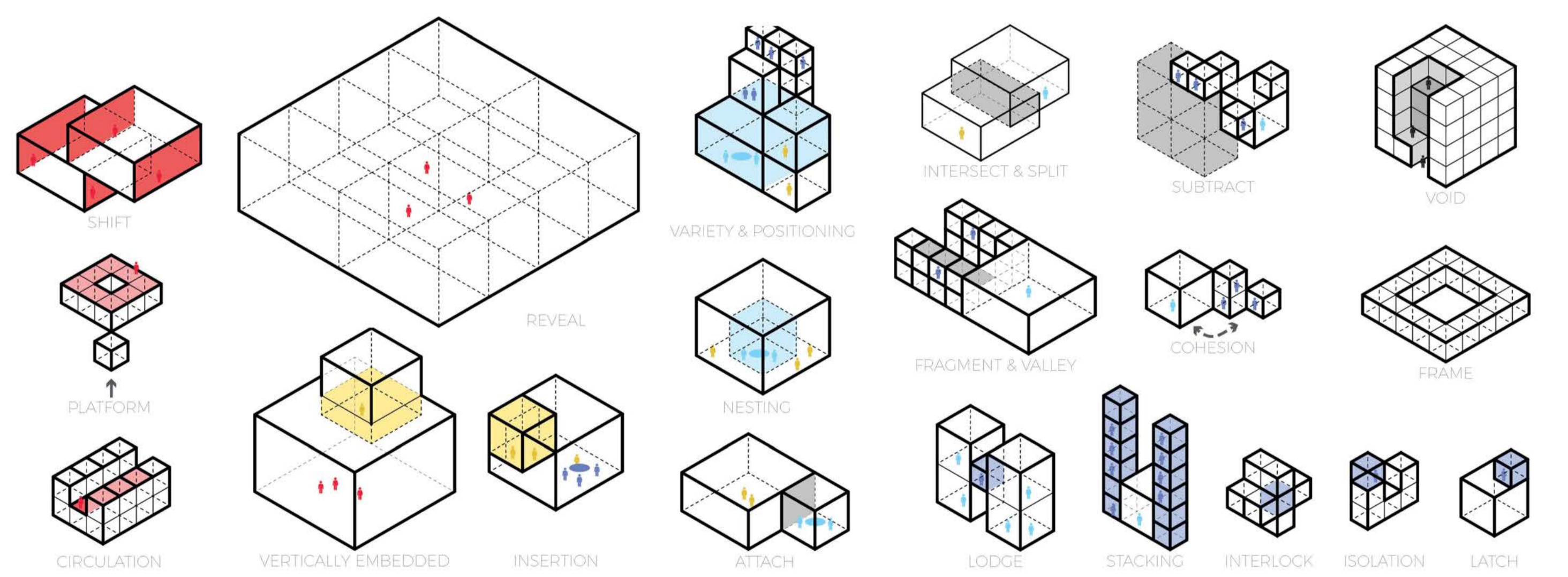
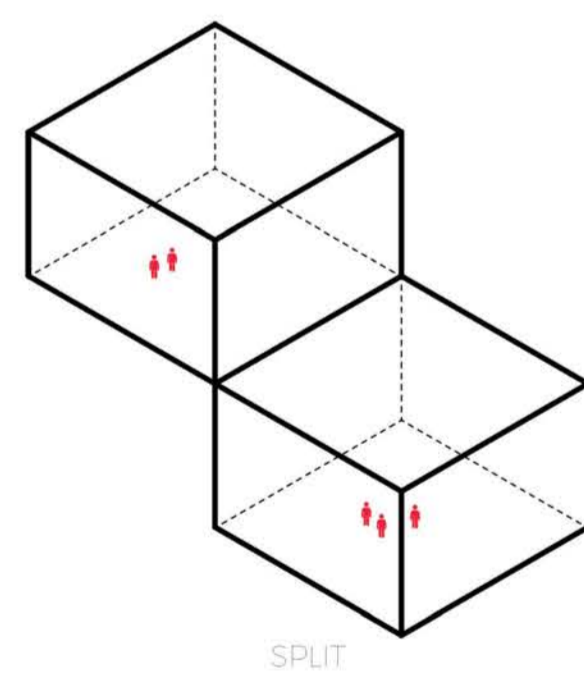
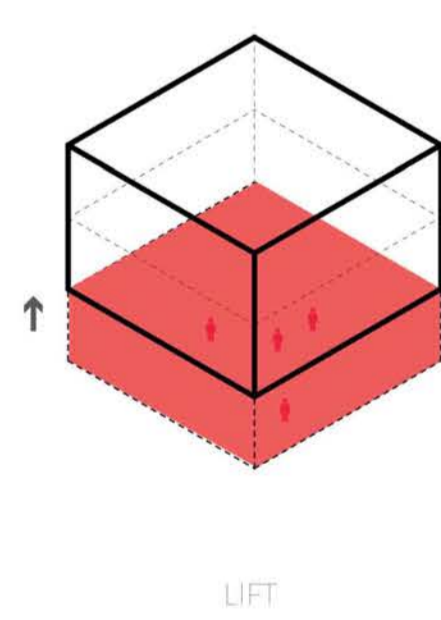
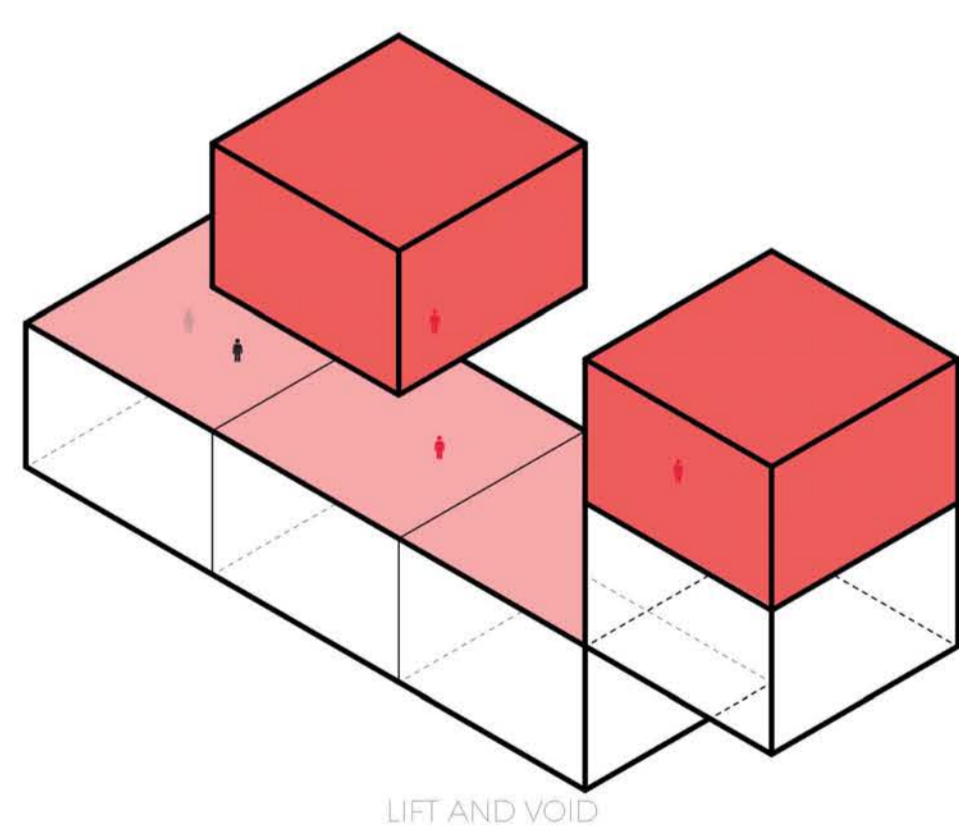
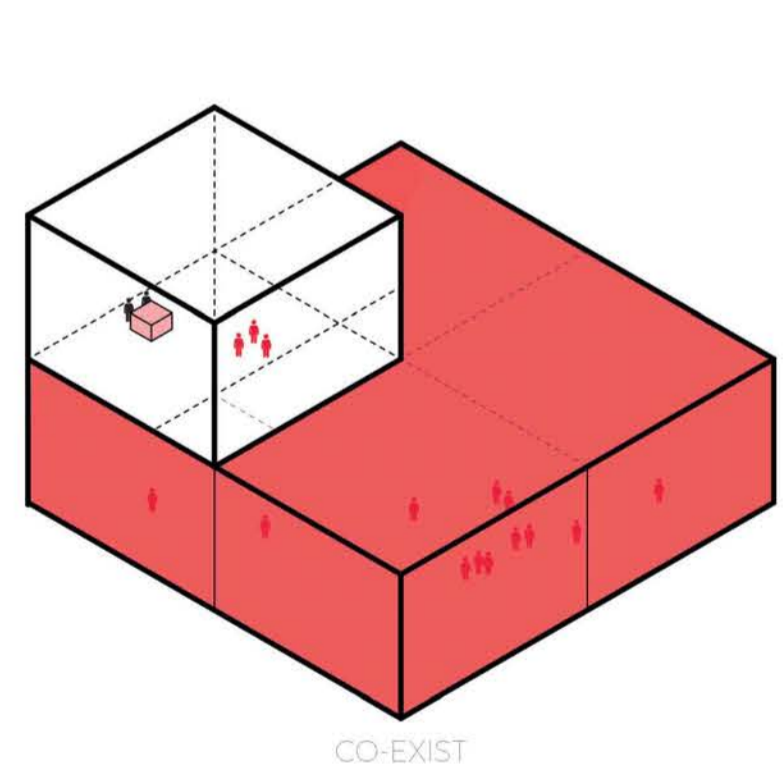


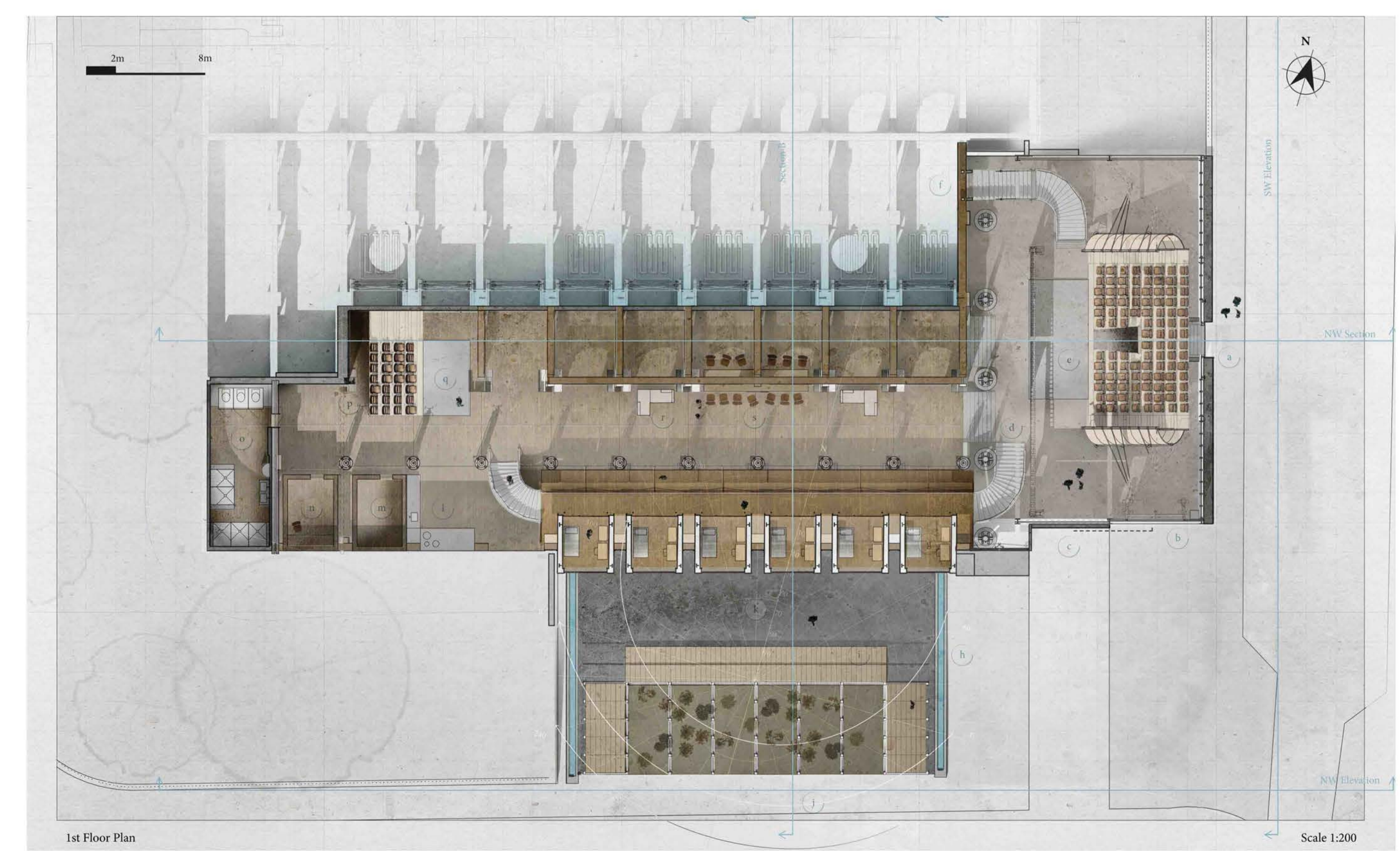
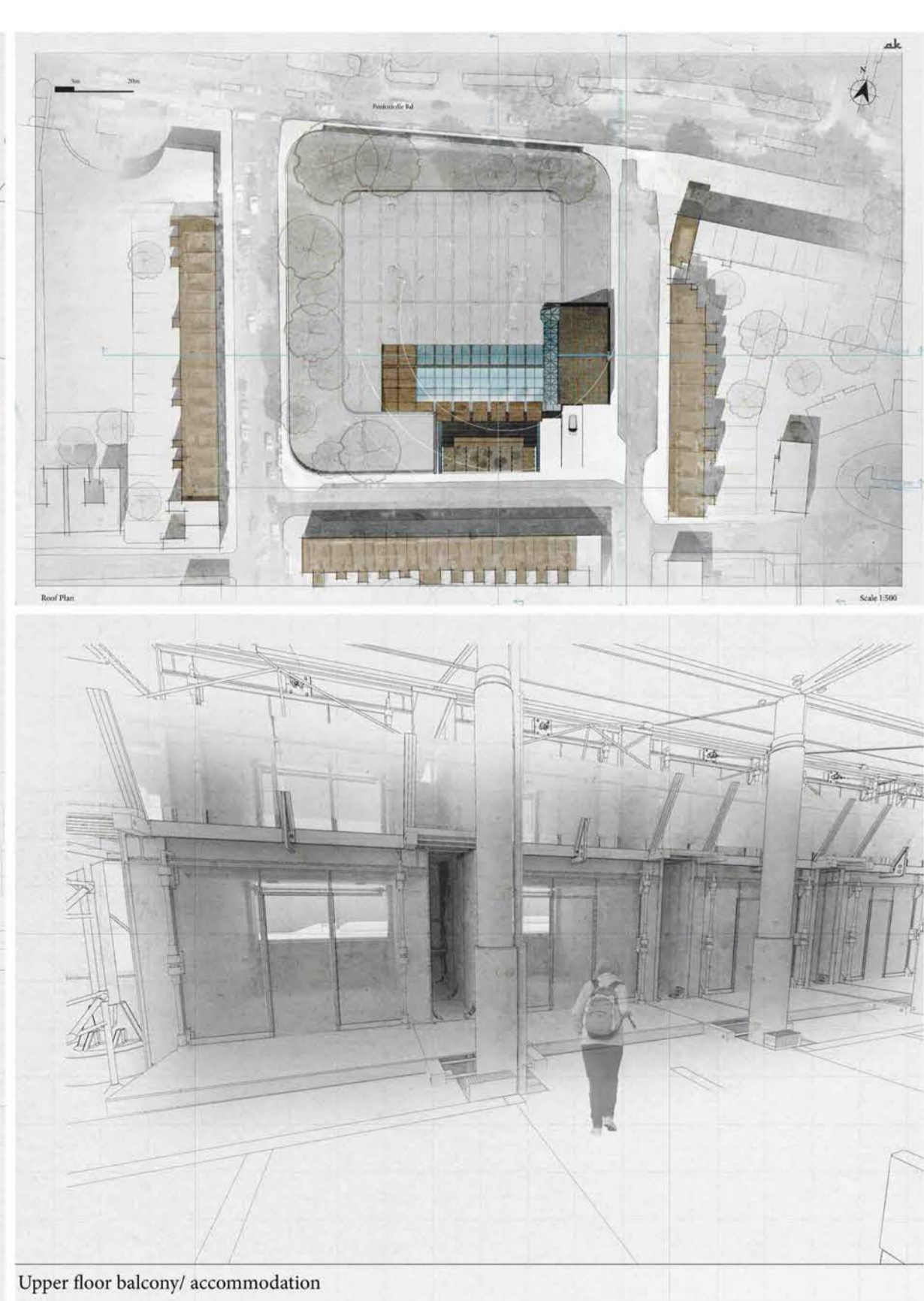
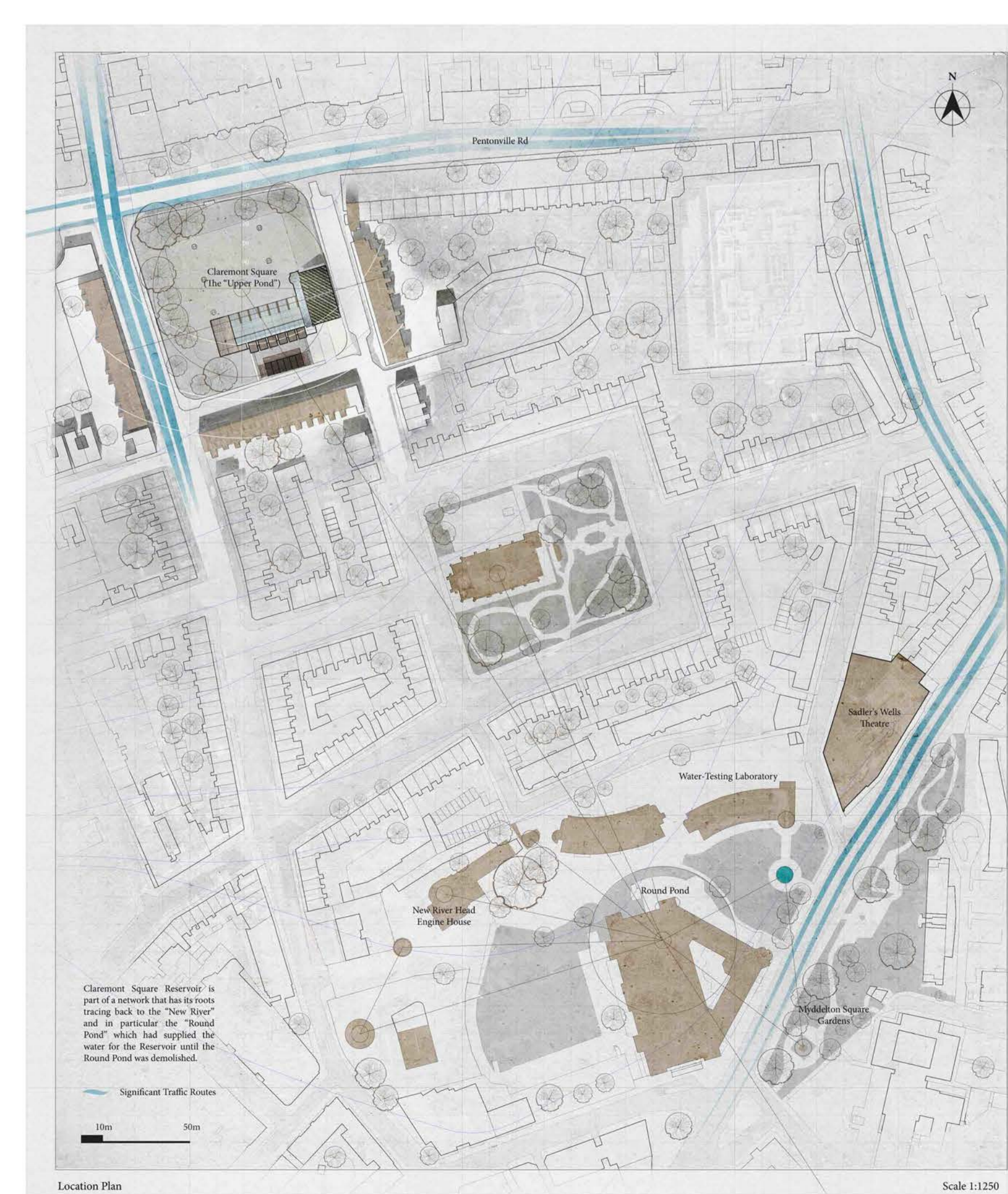
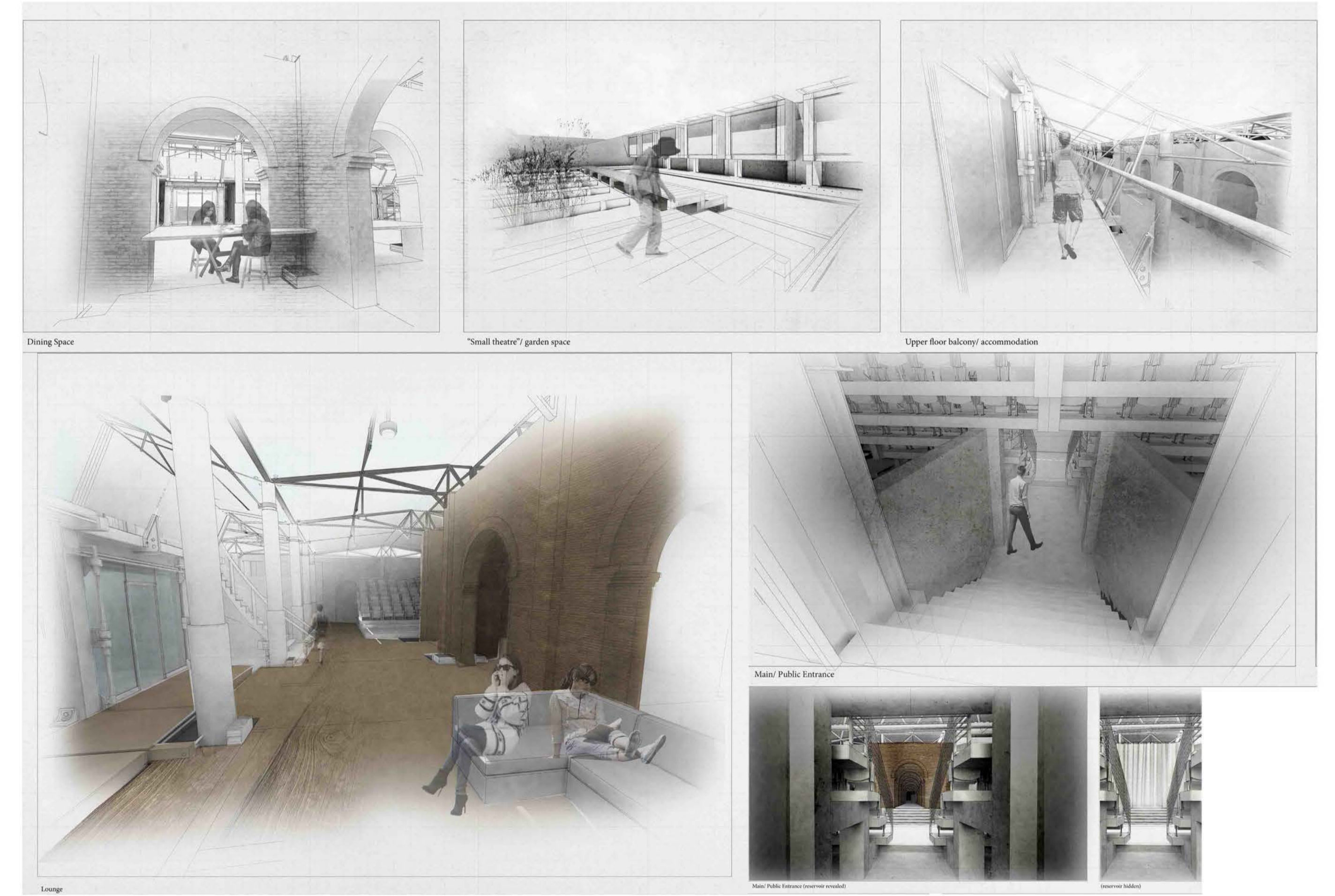
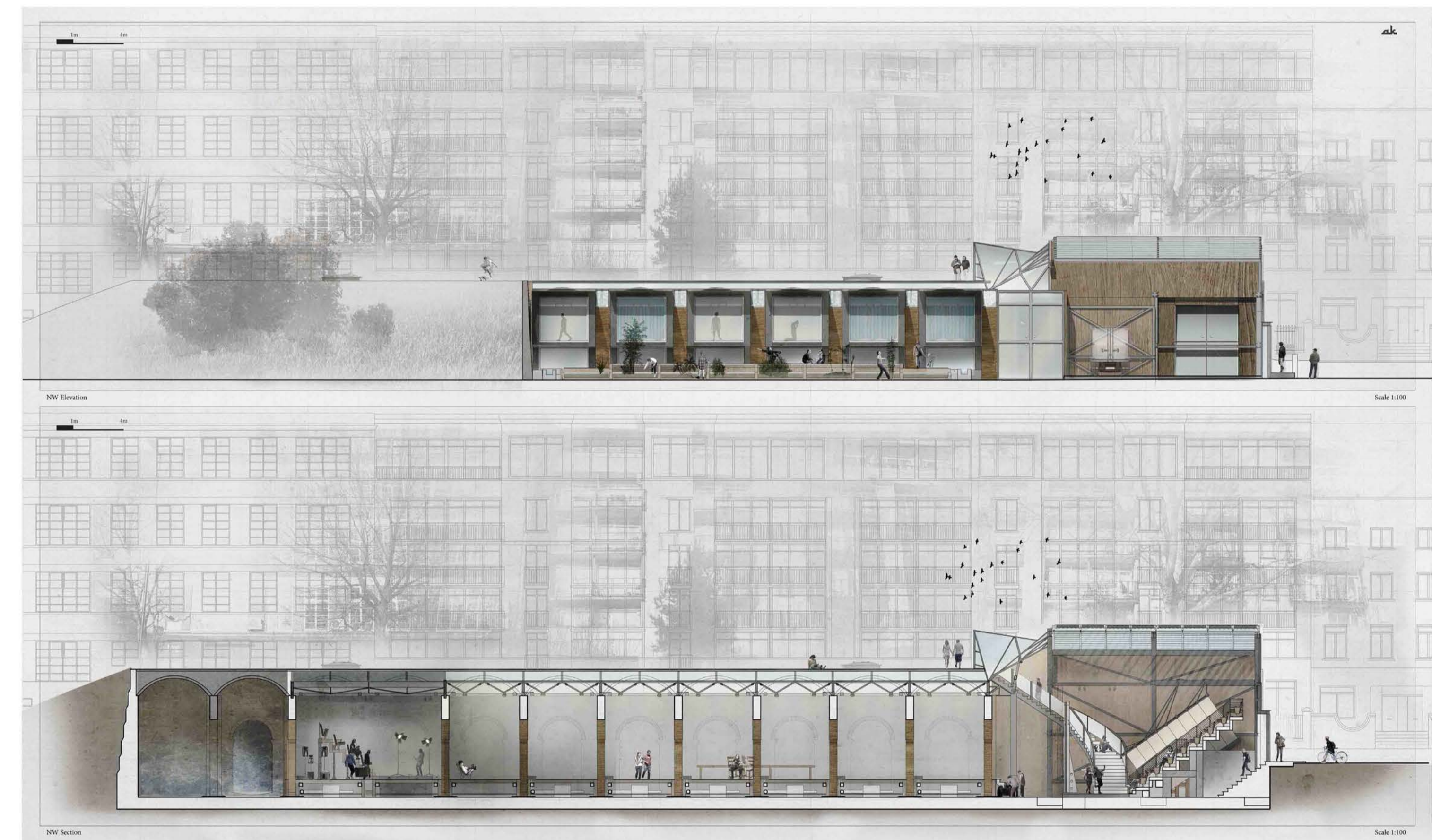
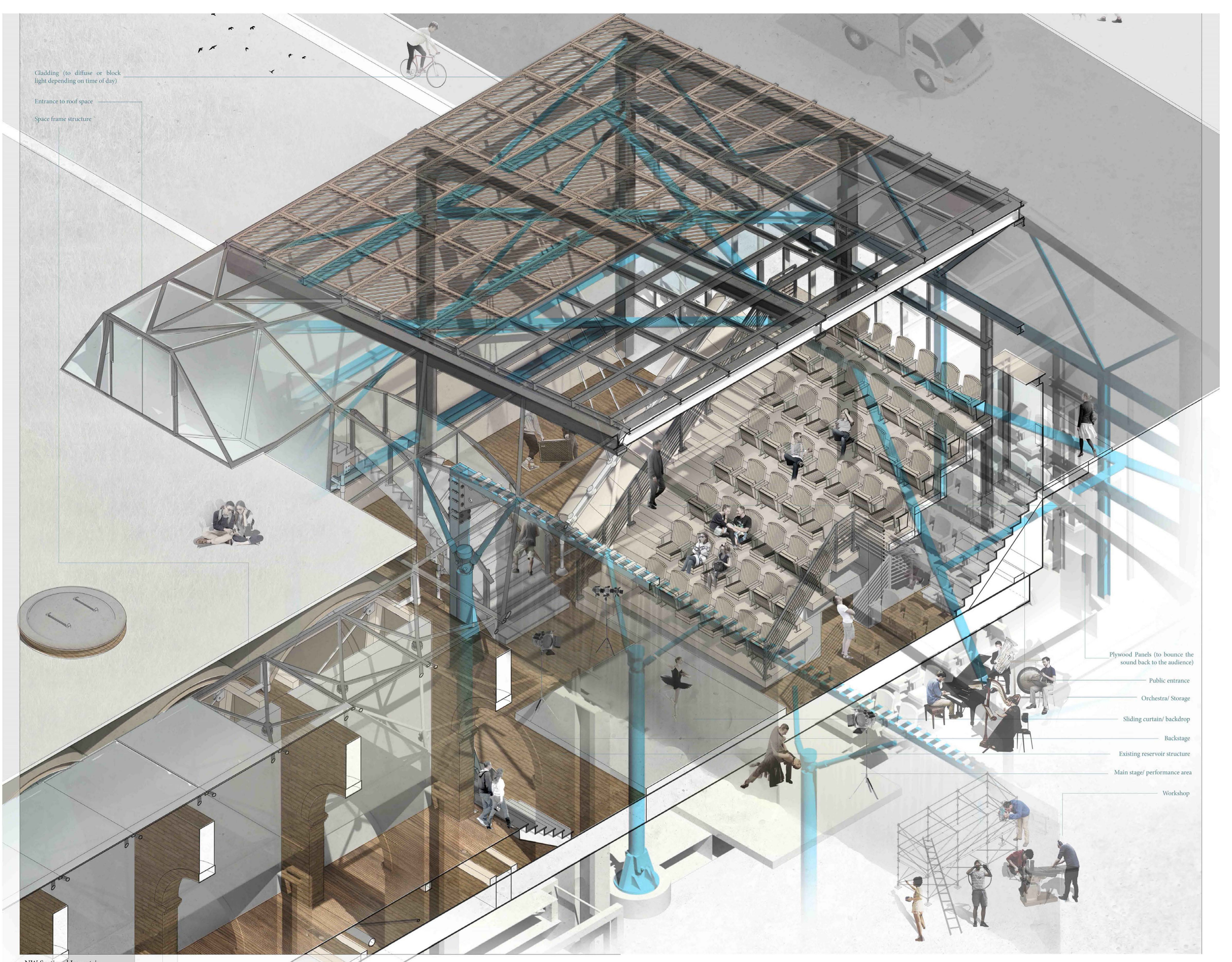
Voxel Library

In a hyper-social Seoul, solitude in the midst of a crowd is a rare urban affordance. Organized as a cube, formed of pixels of various sizes, the library seeks to preserve individuals sense of seclusion and privacy whilst simultaneously establishing,

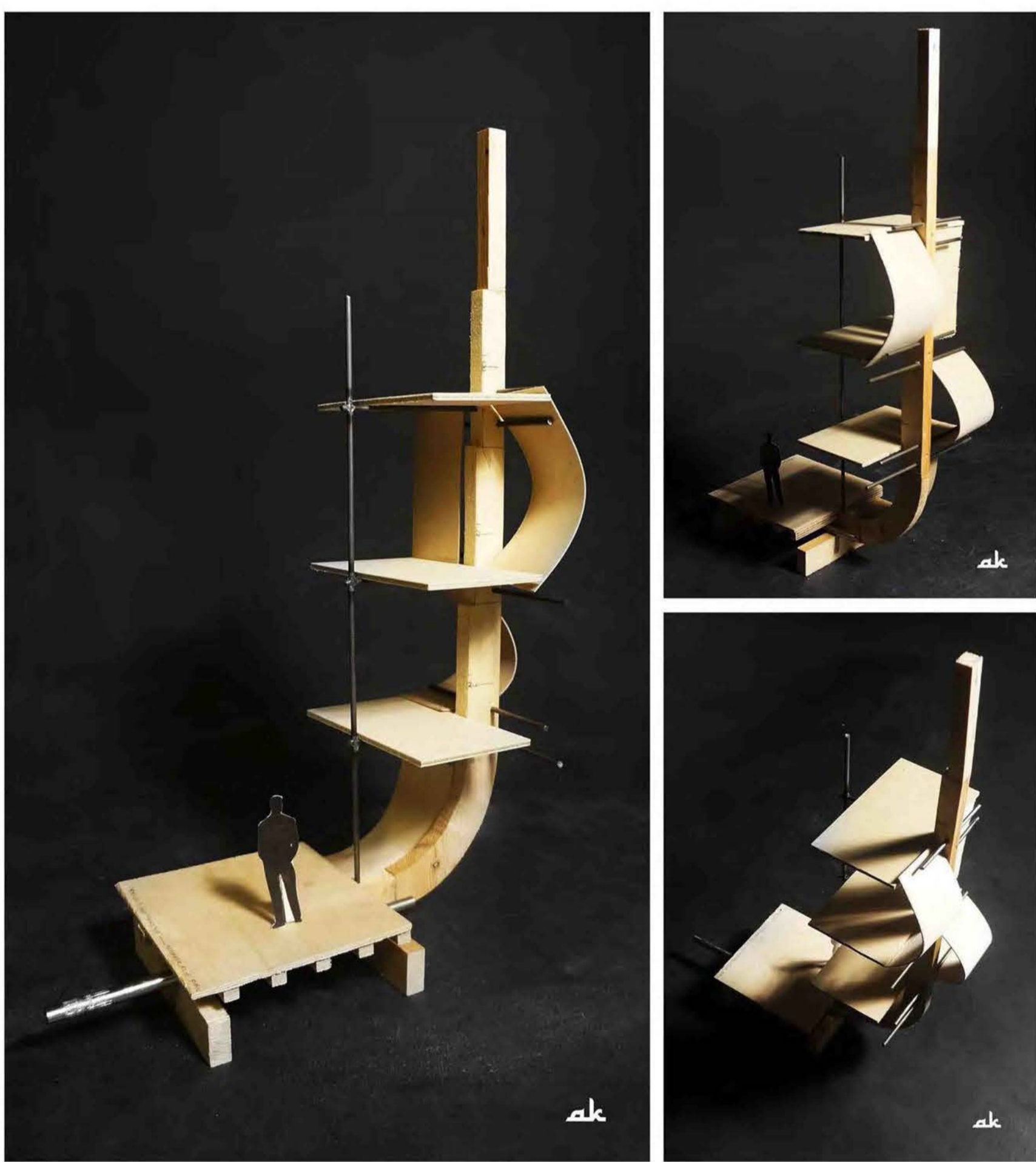
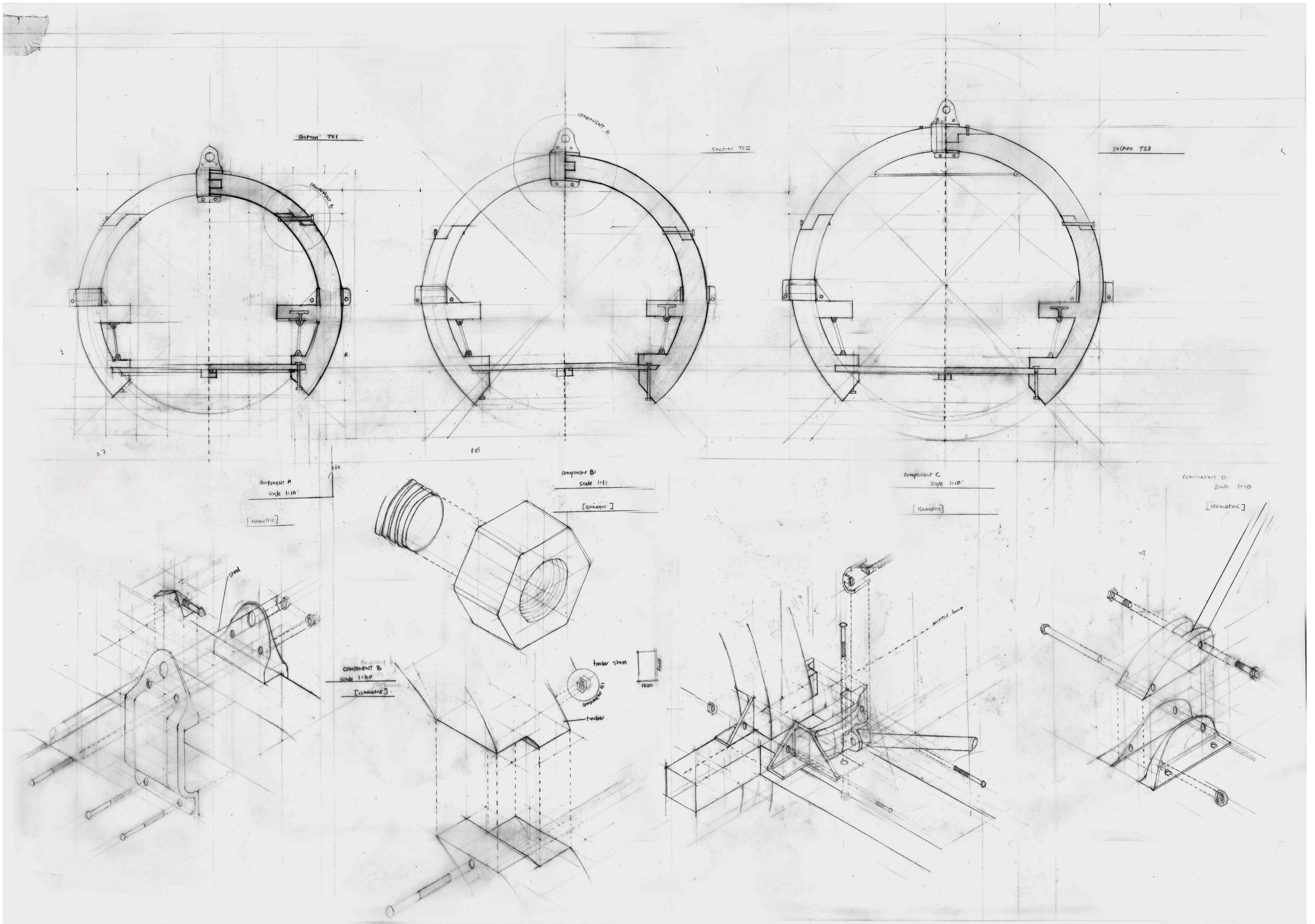
through a central 'voxelated' fissure an augmented sense of collective proximity. The building can be read both as a large single library with a institutional legibility as well as a series of individual libraries clustered around a central void.

VOXEL CURATION METHODS

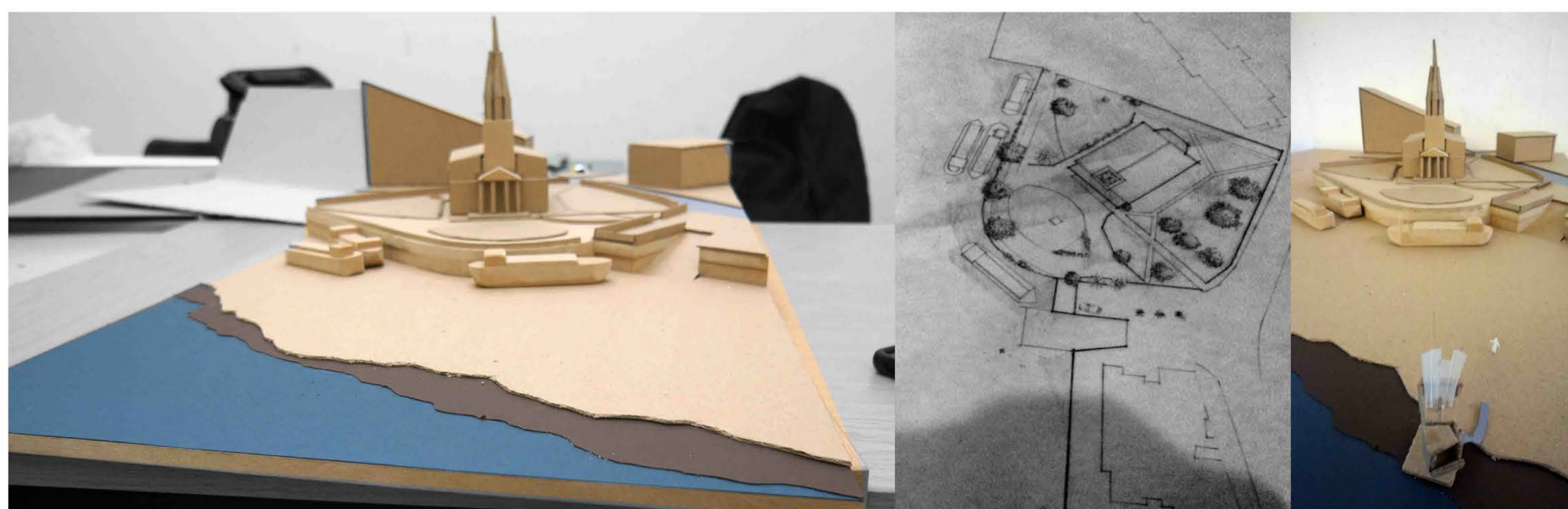
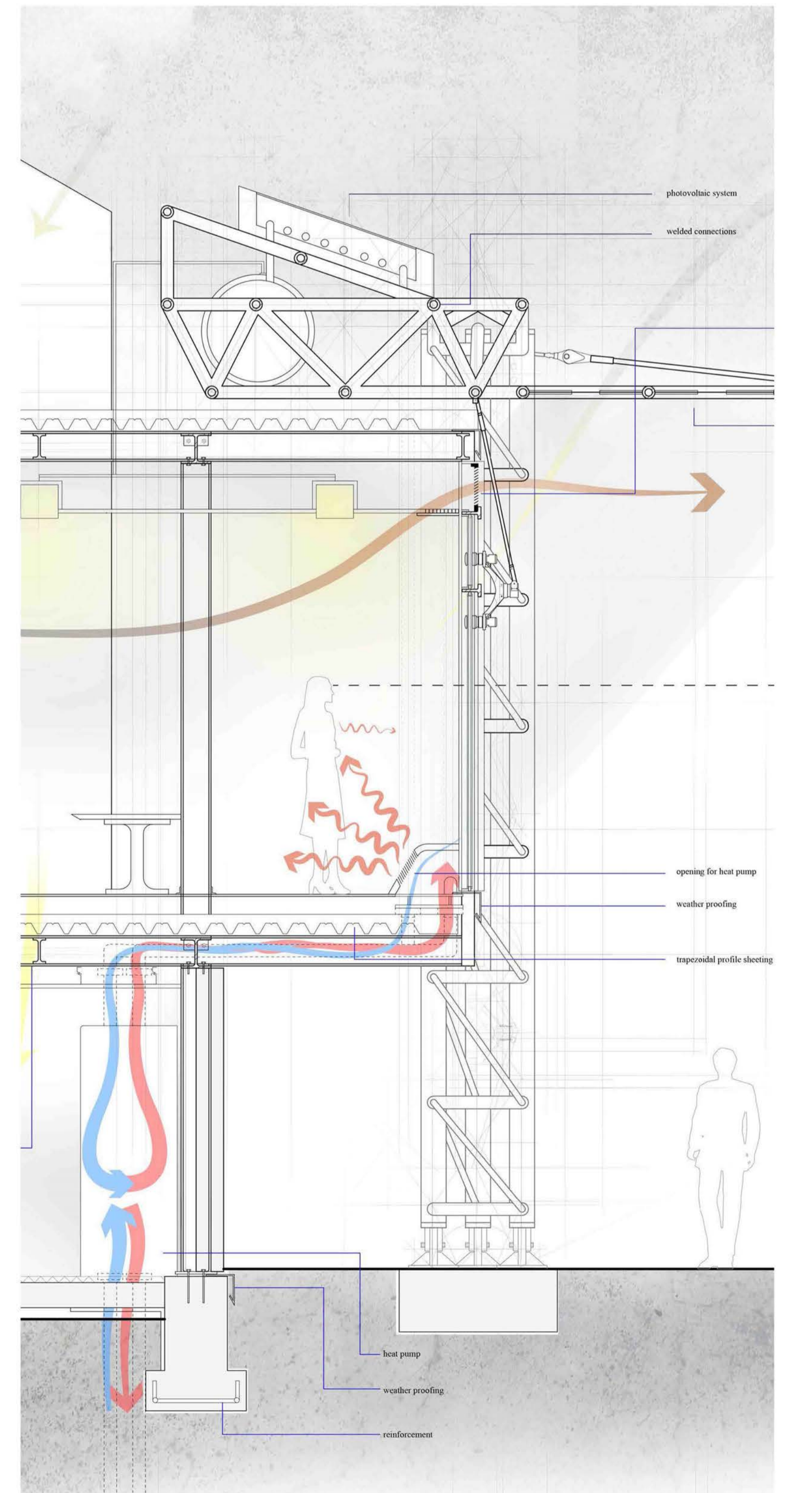
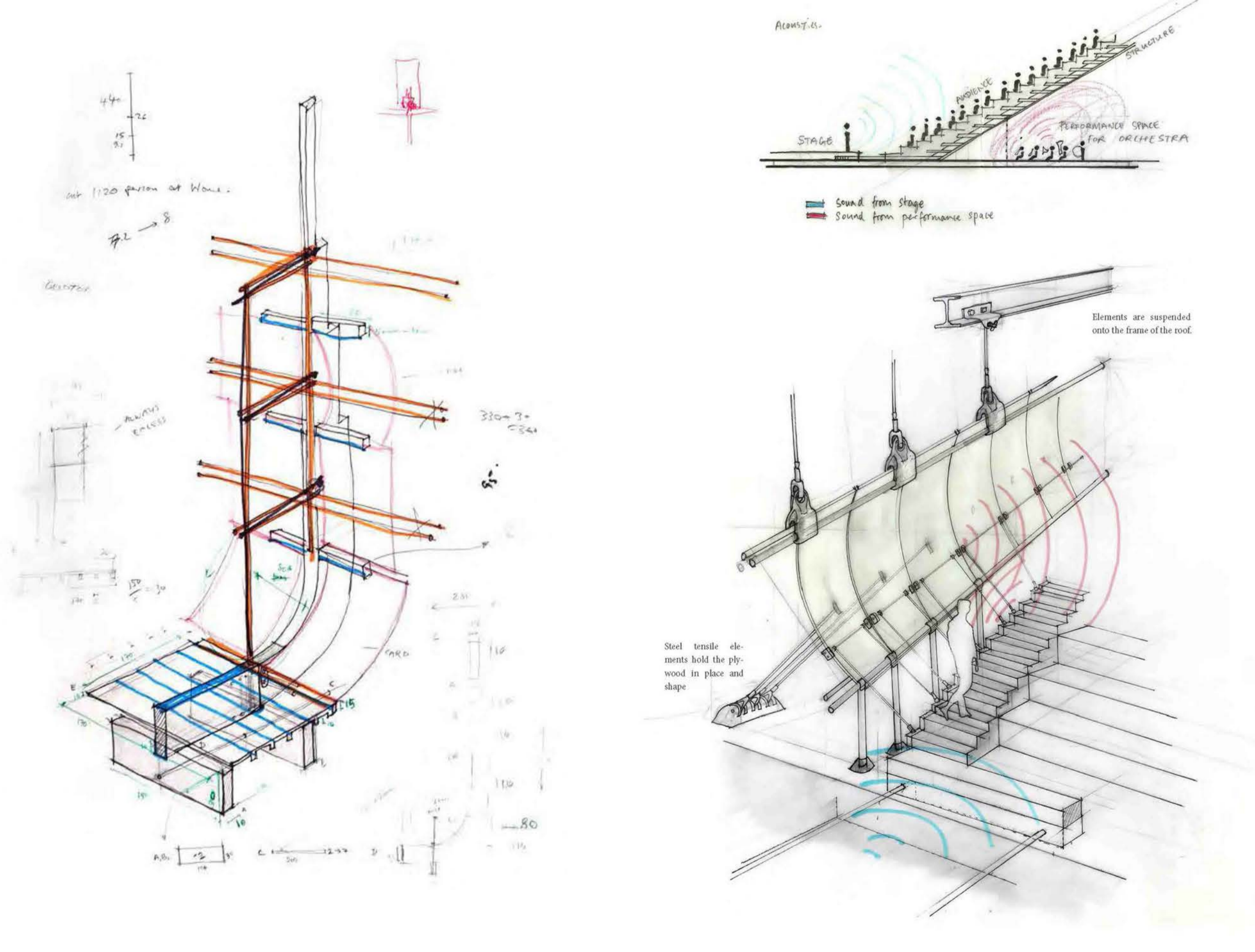




Aquatic Theatre



Fragment Model Scale 1:30



Detail Design

